

# Thank you for respecting our beach rules



# TOWN of DUCK

NORTH CAROLINA

[townofduck.com](http://townofduck.com)

**DUNES ARE FRAGILE!**  
Do not walk, climb, dig,  
slide, jump or  
rappel off dunes.

Use walkways  
& designated  
beach access.

12x12  
maximum  
tent size

★  
Swim near a Lifeguard  
Lifeguards available:

- for beach safety tips
- for rip current info
- to report stranded sea life or turtle nests
- for reports of rule violations



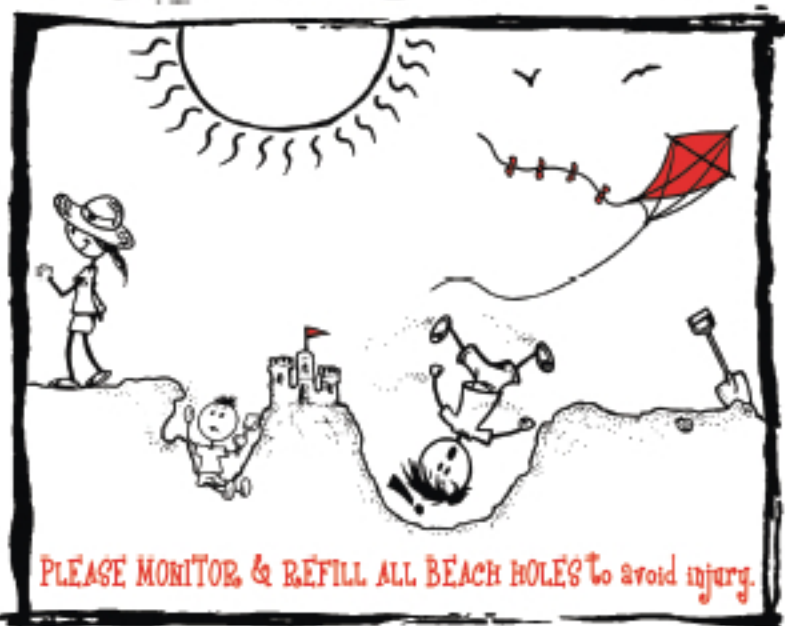
15'

Keep at least 15' between  
beach dune & tents for  
emergency access.

10'  
minimum

DO NOT  
tie tents  
together.

REMOVE ALL UNATTENDED  
PERSONAL ITEMS  
BY 5 PM DAILY  
or they may be  
removed as litter.

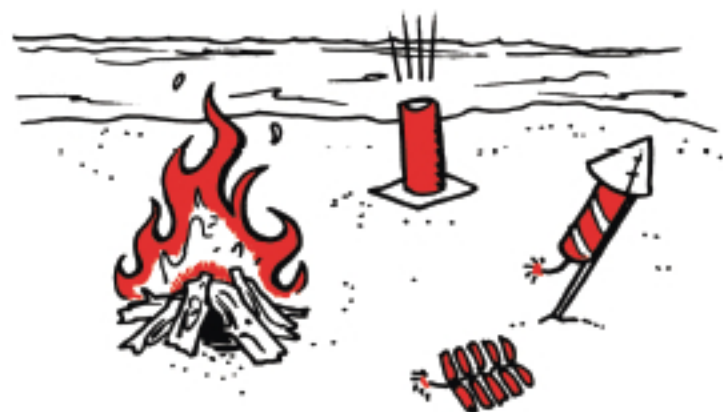


PLEASE MONITOR & REFILL ALL BEACH HOLES to avoid injury.

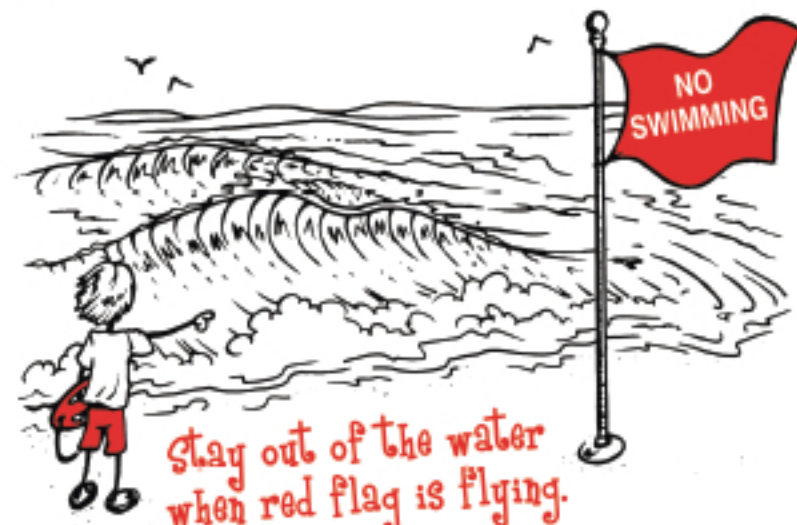


Pets welcome under the control  
and watchful eye of owner.

Keep our beaches clean-please pick-up after your pet.



Fireworks and bonfires are NOT permitted.



Stay out of the water  
when red flag is flying.

**RESPECT THE OCEAN: IF CONDITIONS EXCEED YOUR CAPABILITIES STAY OUT OF THE WATER!**